



Poverty Risk Profile for PEC

How many live on low income?

~3,500
residents

10.1% to 13.5% of PEC residents, up to ~3,500 people, are living on low income (less than \$36,400/year)

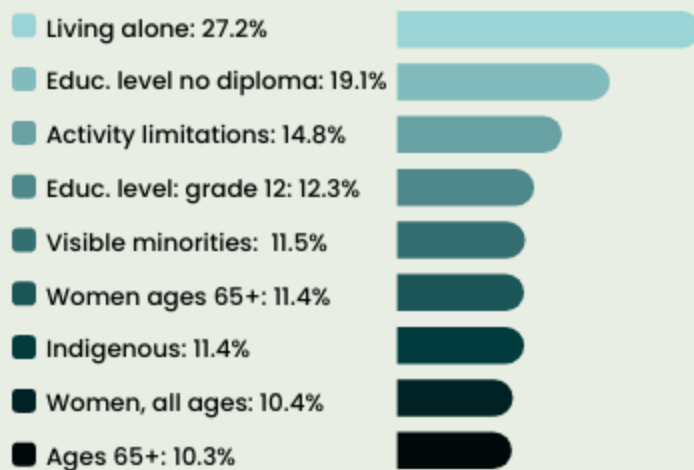
Based on low-income measure after taxes (LIM-AT).



Children who grow up in poverty are more likely to remain in poverty as they age.

Low income rates across PEC population groups

The graph displays low-income percentages among vulnerable population groups.



Who is most vulnerable?

- people living alone
- those with low educational attainment
- people with disabilities
- single-parent families, especially mothers
- Indigenous and racialized people
- seniors, especially women

PEC risk factors for low income

- precarious employment
- high dependence on govt. transfer income
- lower median income compared to Ontario

Impact of poverty

People living in poverty are more likely to face:

- stigma
- housing and food insecurity
- health-related challenges
- limited access to transportation
- limited access to higher education
- employment difficulties
- involvement with the criminal justice system
- reliance on social supports and assistance.

Sources

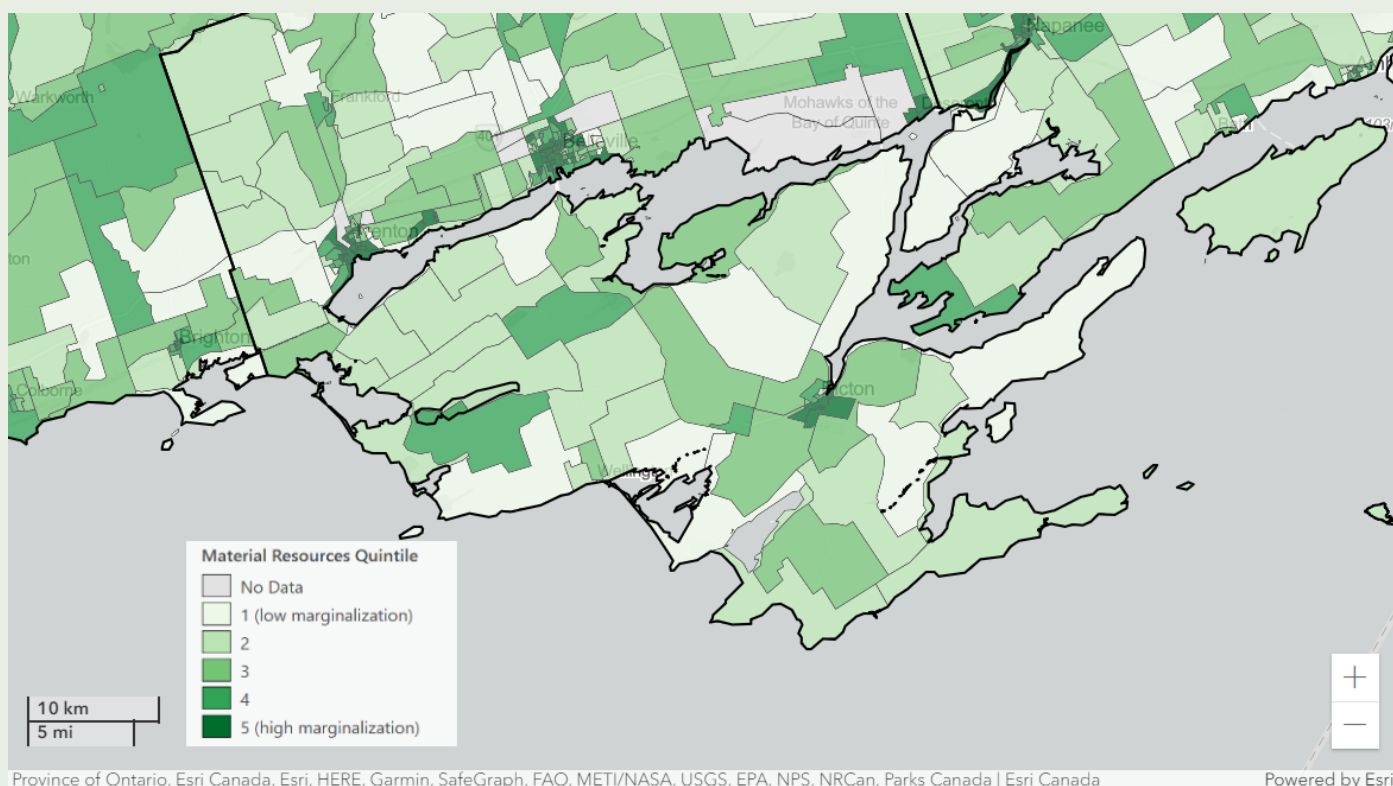
Statistics Canada 2016 & 2021 census • Canada Without Poverty • Community Data Program (CDP)
Questions? email vitalsigns@thecountyfoundation.ca or visit PECdata.ca



Poverty Risk Profile for PEC

Access to material resources

The geomap includes indicators that measure access to and attainment of basic material needs, such as % unemployment and % without a high school diploma.



Sources

Statistics Canada 2021 census • Public Health Ontario

Questions? email vitalsigns@thecountyfoundation.ca or visit PECdata.ca